

Pole Planting HB Hill Country

A guide to where & what

Colin Stace, Senior Catchment Advisor, Hawke's Bay Regional Council



TE KAUNIHERA Ā-ROHE O TE MATAU-A-MĀUI

Where to plant poles & how many

What

3m A grade pole - cattle

Where

Existing slips – limited effect

Prevention not cure – established roots

At risk terrain – advice, SedNet

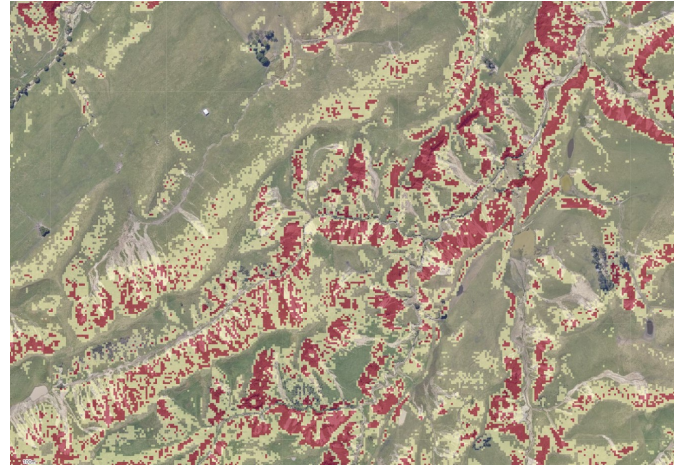
Soil limits – depth, summer moisture

How many

50 – 70/ha – 12 to 15 m, slip

80 – 85/ha – 10 to 12 m, gully & stream

125/ha – 8 x 10, pair planting



Selection of Varieties & Siting

Poplars

P. Euramericana hybrids -

Veronese, Crowsnest, Fraser, Otahuaio

Balm hybrids – Kawa, Shinsei, Gus

Willows

S. matsudana – PN227, PN693, PN694

S. matsudana x alba – Tangoio, Moutere

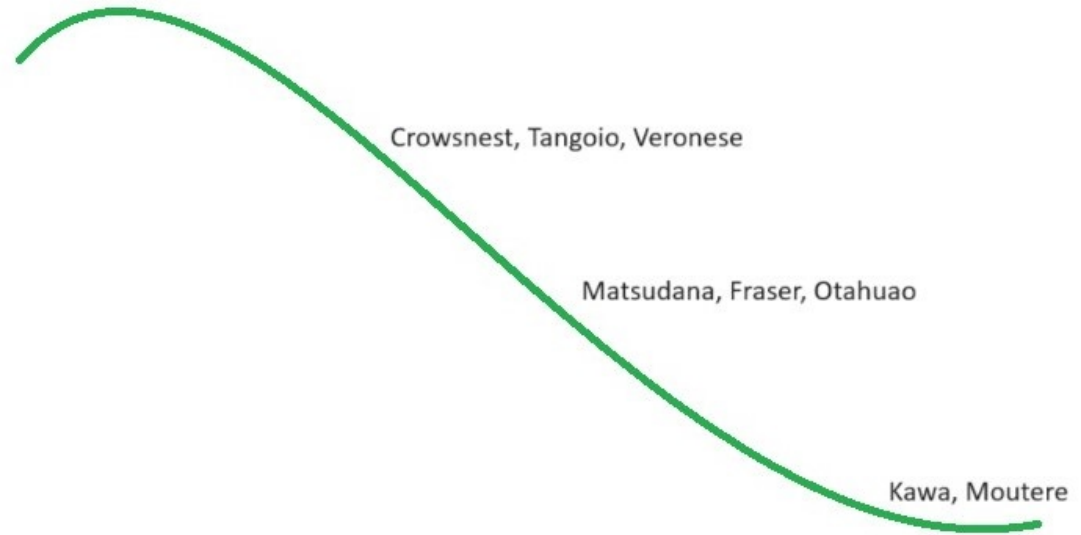
Experimental hybrids – bulking up

Siting

Environmental – soil depth / moisture, aspect

Topographic – swales, surface drainage pattern

Slope Guide - adjust for aspect



Varieties



Veronese & Kawa (autumn)



Kawa



Crowsnest

Response to site



3-year-old Veronese – alluvial soil, Gisborne

Planting

Preparation

Resources – people & equipment, sleeves etc, timing

Access – transport routes, drop-off points, spreading out

Layout – planting plan, briefing **Tip: use pole as measuring stick**

Planting

Driver - double handled + crowbar or spike & tube type

Auger - motorised, 150 -180 mm auger, ram soil backfill

Combo - auger guide hole c. 50 mm, then use driver

Guide hole - the key to planting, 700-800 mm

Pointing - slice or chisel point

Close hole - no air gap



See <https://www.poplarandwillow.org.nz/documents/planting-poplars-willows-successful-planting>

After care

1st Spring/Summer check

Livestock – pushed over or broken: hotwire or exclude from paddock

Air gap/cracks – re-ram, cover with loose soil

Sleeves – check for lifting or damage

Pruning

Single leader - 2nd or 3rd year, select best leader

Side lift - 3rd year on, no more than 1/3 crown height, up to 3 – 4 m

Timing - late season, February / March

Pollarding – emergency stock fodder, 4 - 5 year old + rotation



See <https://www.poplarandwillow.org.nz/documents/pollarding-willows-from-within-the-tree>

The Take Home Messages

- Plan – terrain to target, how many & variety
- Prepare – line up resources, people & timing
- Spacing – set out for best value
- Field Time - factor in transport and layout
- Guide hole – key to ease of planting
- Initial establishment – check for issues
- Prune – improved form, reduced shading

